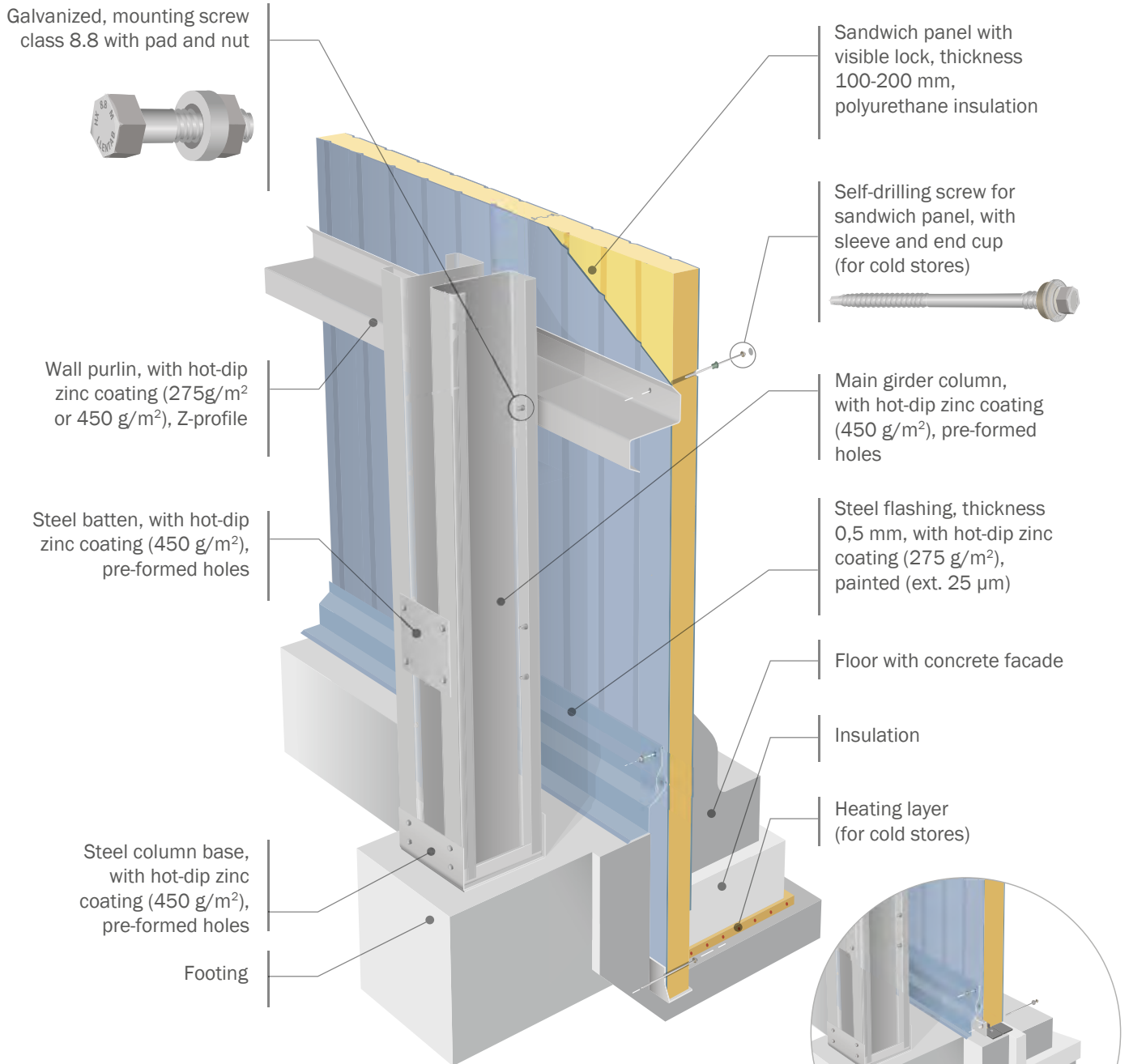
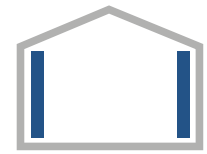
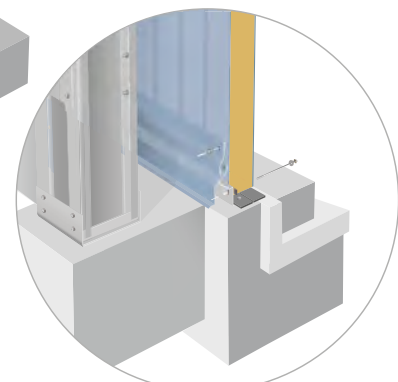


# TYPE 6W

## Wall insulation Vertical sandwich panel arrangement



Alternative for production halls



Certificate



Thermal transmittance  
 $U_c$  [W/m<sup>2</sup>K]

	-30 °C (frost)	0 °C - 8 °C (cold)	>16 °C (2014) (production)	>16 °C (2017) (production)
$U_c$ required	-	-	0,25	0,23
Insulation thickness (mm)*	<b>160</b>	<b>100</b>	<b>100</b>	<b>100</b>
$U_c$	0,14	0,22	0,22	0,22
$U_o$	0,14	0,22	0,22	0,22

\* Insulation meets required  $U_c$

